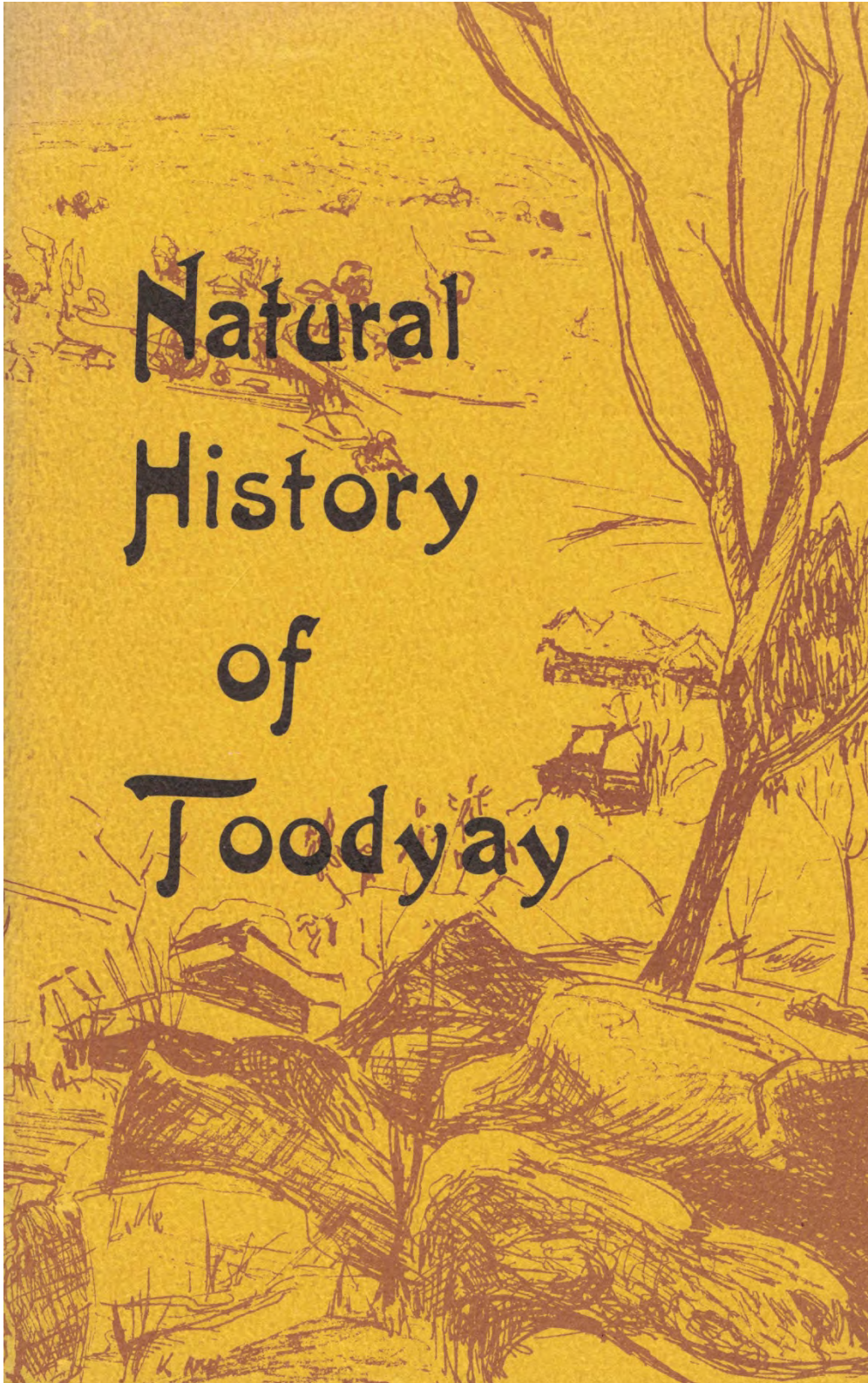


## PUBLICATIONS

### BOOKS

#### **The Natural History of Toodyay (OUT OF PRINT)**

First Edition, 1979    ISBN 0 9595569 0 7

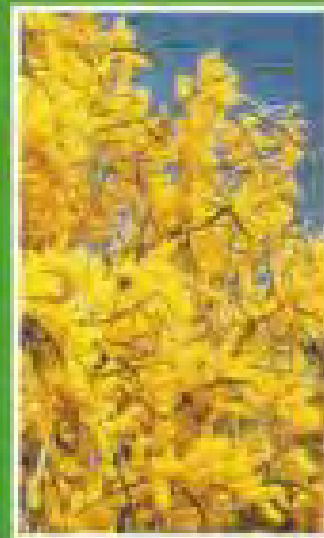


**The Avon Valley; The Naturalists' View (LIMITED STOCKS)**

First Edition 1986      ISBN 0 9595569 1 S

# THE AVON VALLEY: THE NATURALISTS' VIEW

Editor  
M. Walker



Toodyay Naturalists' Club  
Toodyay, W.A.  
1986

**The Pioneers' Arboretum (LIMITED STOCKS)**

First Edition 1992    ISBN 0 9595569 2 3

*Toodyay*



**40 Years of observation and education**

First Edition 2010    ISBN 978 0 9595569 3 3



## **The Toodyay Naturalists' Club**

**40 years of observation and education  
(1968 – 2008)**



**Compiled by**

**Members of the Toodyay Naturalists' Club Inc.**

**Edited by Beth Frayne and Robyn Taylor**

**A guide to exploring Toodyay... naturally** (LIMITED STOCKS OF FIRST EDITION PRINTS AVAILABLE)

First Edition 2018 ISBN 978 0 9595569 0 2



## STEPS

- (1) Decide on your location in the Shire (West or East)
- (2) Decide soil type
- (3) Select trees for your area
- (4) Make sure tree size is and type is suitable for site (i.e. don't plant large trees near your house - check the Shire bush fire regulations on this
- (5) Check no electrical wires are overhead

## HINTS

- (1) Plant in groups of odd numbers not in rows
- (2) Plant only the number of trees you are sure you can water
- (3) Water at least monthly in clay soils More frequently in sandy soil for first summer
- (4) If possible, rip ground to one metre 12 months before planting (follow contour)
- (6) Mulch around trees - leave small gap around trunk
- (7) Consider linking areas to encourage movement of birds and native animals
- (8) Fence from stock. Make sure horses can't reach trees over the fence
- (9) Walk and inspect trees frequently

Local trees are recommended so we can retain the original character of the country around us - they are in harmony with the insects, birds and other wildlife, having evolved with time in the conditions of Toodyay, and are part of the local web of life.



Corymbia calophylla  
(Marri)

This brochure was prepared by the Toodyay Naturalists' Club with financial assistance from the Toodyay Land Conservation District Committee

More detailed information can be found in

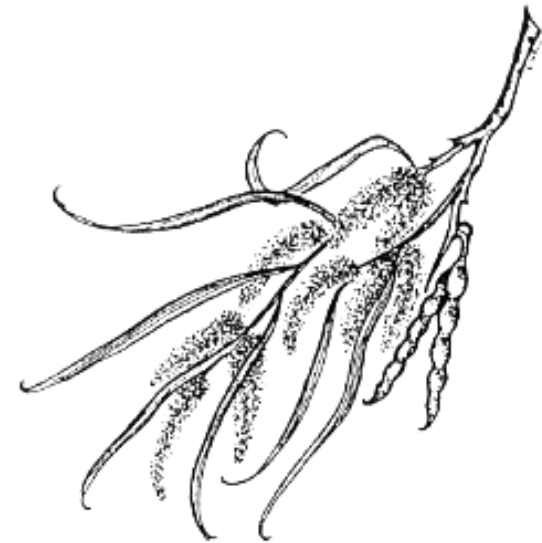
*"The Avon Valley: The Naturalists View"* available from the Club on email [info@toodyaynats.org.au](mailto:info@toodyaynats.org.au)

The Toodyay Naturalists' Club meets at 7pm on the 3rd Saturday of the month.

See the Toodyay Herald for details or [www.toodyaynats.org.au](http://www.toodyaynats.org.au)

© Toodyay Naturalists' Club Inc. 2019

# SOME COMMON TREES OF TOODYAY



Acacia acuminata  
- (Raspberry Jam Tree)

NATURE SERIES No. 1

Botanical name & common name	Height	Soil	Flower colour	Lifespan approx	Comments
Acacia acuminata Jam wattle	5m	Sandy-loam	Yellow	35 yrs	Mostly central valley country
Acacia saligna Western wattle	6m	Sand/loam gravel	Yellow showy	15yrs	River and creek areas Widespread in Shire
Acacia microbotrya Manna gum	5m	Sand/loam gravel	Yellow showy April-July	20yrs	Fast growing. Widespread in Shire
Casuarina obesa Swamp sheoak	15m	River/brooks	-	100yrs +	Salt tolerant
Allocasuarina huegeliana Rock sheoak	5m	Sand/loam	-	50- 100yrs	Hill and granite areas
Banksia attenuate	6m	Sand	Yellow cone-like flowers	40yrs	Found in sandy soils - tree in western, shrub in eastern areas. Attracts birds
Banksia grandis Bull banksia	6m	Sand Gravel	Yellow large cone shaped Sep-Dec	25yrs	Sandy soils in Western area of the Shire. Saw-like leaf. Attracts birds
Banksia menziesii Firewood banksia	10m	Sand	Pale to deep pink cone-like flowers	40yrs	Sandy soils in Western areas of Shire. Associated with Banksia attenuate. Attracts birds
Corymbia calophylla Marri	25m	Laterite uplands	Creamy white	100yrs	Mainly in west of Shire uplands Majestic tree
Eucalyptus accedens Powder bark wandoo	20m	Sand/loam gravel	Creamy white	100yrs	Associated with wandoo (white gum)
Eucalyptus loxophleba York Gum	15m	Loam, grey clays, granite	Creamy white	100yrs	Associated with Jam tree - Granite - rock areas
Eucalyptus macrocarpa Rose of the West	5m spreads	Sand/gravel	Pink to red - large showy flowers	100yrs	East of Shire only - silver-grey foliage - straggly habit
Eucalyptus marginata Jarrah	20m	Sand/gravel	Cream	100yrs+	West of Shire mainly
Eucalyptus rudis Flooded gum	20m	Valley along river&brooks	Cream	100yrs+	Moderately salt tolerant Dense shade
Eucalyptus salmonophloia Salmon gum	25m	Sand-loam	Cream	100yrs+	East of Shire only - umbrella shaped
Eucalyptus wandoo White gum	15m	Sand-loam grey clay	Cream	100yrs+	Throughout Shire in suitable soils
Hakea preissii Needlewood	6m	Sandy loam	Yellow	50yrs	Sharp needle-like leaves. Small birds nest in this for protection
Melaleuca preissiana	10m	Wet soil, river silts	White-yellow Nov-Jan	100yrs+	Along wet water courses
Melaleuca raphiophylla Swamp paperbark	10m	Damp areas, river silts	White-yellow Nov-Jan	100yrs+	Along wet water courses and swamps
Pittosporum phylliraeoides Weeping native apricot	4m	Grey clay to sand	Cream fruit, orange colour, 22mm long	50yrs	Mainly east of Shire Weeping branches